

- Components
 - Display
 - Context Menu
 - Default User Interface
 - Colors and Fonts
 - Playlist View
 - File Types
 - General
 - Keyboard Shortcuts
 - Media Library
 - Album List
 - Networking
 - Playback
 - DSP Manager**
 - Output
 - ASIO Virtual Devices
 - Tools
 - Converter
 - Tagging
 - Advanced

Active DSPs

Configure selected

George Yohng's VST Wrapper
Crossover

Available DSPs

<=>
=>
Up
Down

Advanced Limiter
Convert 5.1 to stereo
Convert mono to stereo
Convert stereo to 4 channels
Convolver
Crossfader
Downmix channels to mono
Equalizer
Hard -6dB limiter
Move stereo to rear channels
Resampler (PPHS)
Reverse stereo channels
Skip Silence
VST bridge

Presets

Load

Save

Delete

Reset All

Reset Page

Help

Close

- Components
 - Display
 - Context Menu
 - Default User Interface
 - Colors and Fonts
 - Playlist View
 - File Types
 - General
 - Keyboard Shortcuts
 - Media Library

Active DSPs




Configure selected

Available DSPs

George Yohng's VST Wrapper
Crossover

Advanced Limiter

- None --
- Electri-Q (posihfopit edition)
- ✓ LPGEQ2_1
- LPGEQ2_for_mastering
- LS_filter
- VOXENGOSPAN
- align
- crossvolver

-  Use VST Effect
-  Show/Hide Plugin Editor
-  VST Setup...
- Bypass

- About...
- Home Page
- Free VST Effects

- Components
- Display
- Context Menu
- Default User Interface
 - Colors and Fonts
 - Playlist View
- File Types
- General
- Keyboard Shortcuts
- Media Library
 - Album List
- Networking
- Playback
- DSP Manager
- Output
 - ASIO Virtual Devices
- Tools
- Converter
- Tagging
- Advanced

Active DSPs

Configure selected

George Yohng's VST Wrapper
Crossover

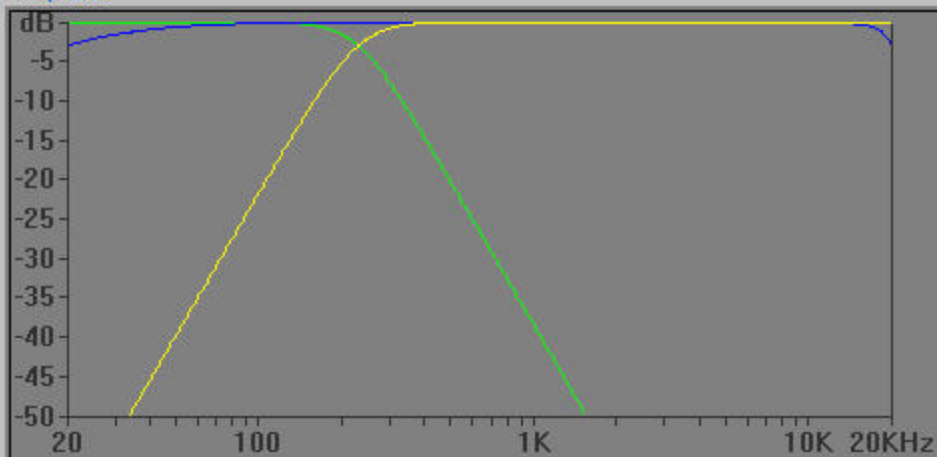
Presets

Reset All

Reset Page

Crossover

Response



Filter

Sub Low Mid High

Filter: Butterworth Plot

Type: High Pass Config...

Frequency: 230 Hz Impulse...

Order/Ripple: 3rd (18dB/oct) -0.1 dB

Gain: -9.6 dB Apply Cancel

Response

- Spectrum
- Filters
- Filters Sum
- Magnitude
- Phase

Properties...

Output

Source Mute Output

Low 1,2 (FLR)High 3,4 (SLR)

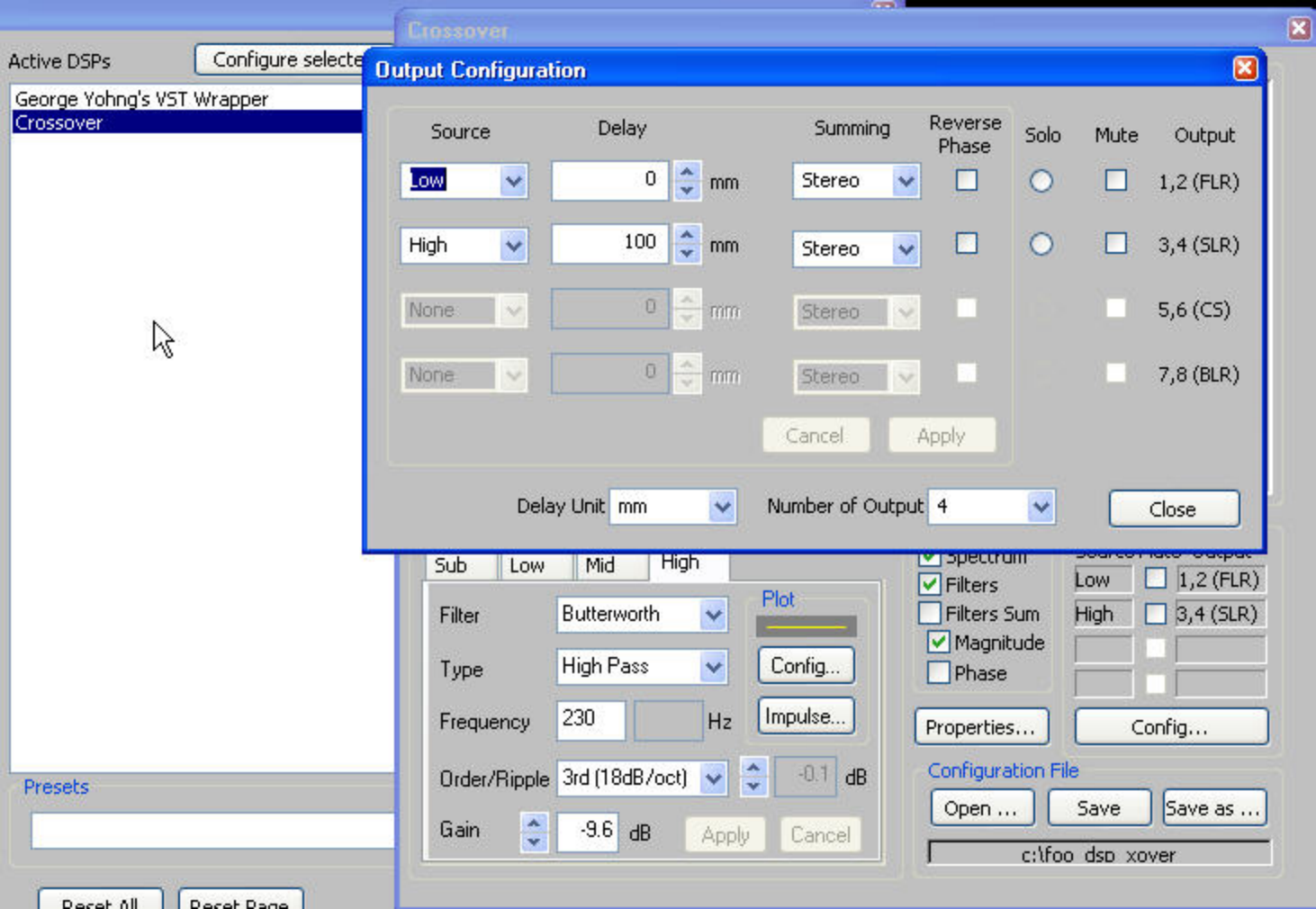
Config...

Configuration File

Open ...

Save

Save as ...



Crossover

Output Configuration

Source	Delay	Summing	Reverse Phase	Solo	Mute	Output
Low	0 mm	Stereo	<input type="checkbox"/>	<input type="radio"/>	<input type="checkbox"/>	1,2 (FLR)
High	100 mm	Stereo	<input type="checkbox"/>	<input type="radio"/>	<input type="checkbox"/>	3,4 (SLR)
None	0 mm	Stereo	<input type="checkbox"/>		<input type="checkbox"/>	5,6 (CS)
None	0 mm	Stereo	<input type="checkbox"/>		<input type="checkbox"/>	7,8 (BLR)

Cancel Apply

Delay Unit: mm Number of Output: 4 Close

Filter Configuration

Sub Low Mid High

Filter: Butterworth [Plot](#)

Type: High Pass [Config...](#)

Frequency: 230 Hz [Impulse...](#)

Order/Ripple: 3rd (18dB/oct) \pm -0.1 dB

Gain: -9.6 dB [Apply](#) [Cancel](#)

Spectrum

Spectrum

Filters

Filters Sum

Magnitude

Phase

[Properties...](#) [Config...](#)

Configuration File

[Open ...](#) [Save](#) [Save as ...](#)

c:\foo dsp xover



Presets: bidon1

Save As...

Delete

LinearPhaseGraphicEQ 2

slim slow slider presents



Reset

0.0dB



MasterGain

25



BandWidth

Compare

